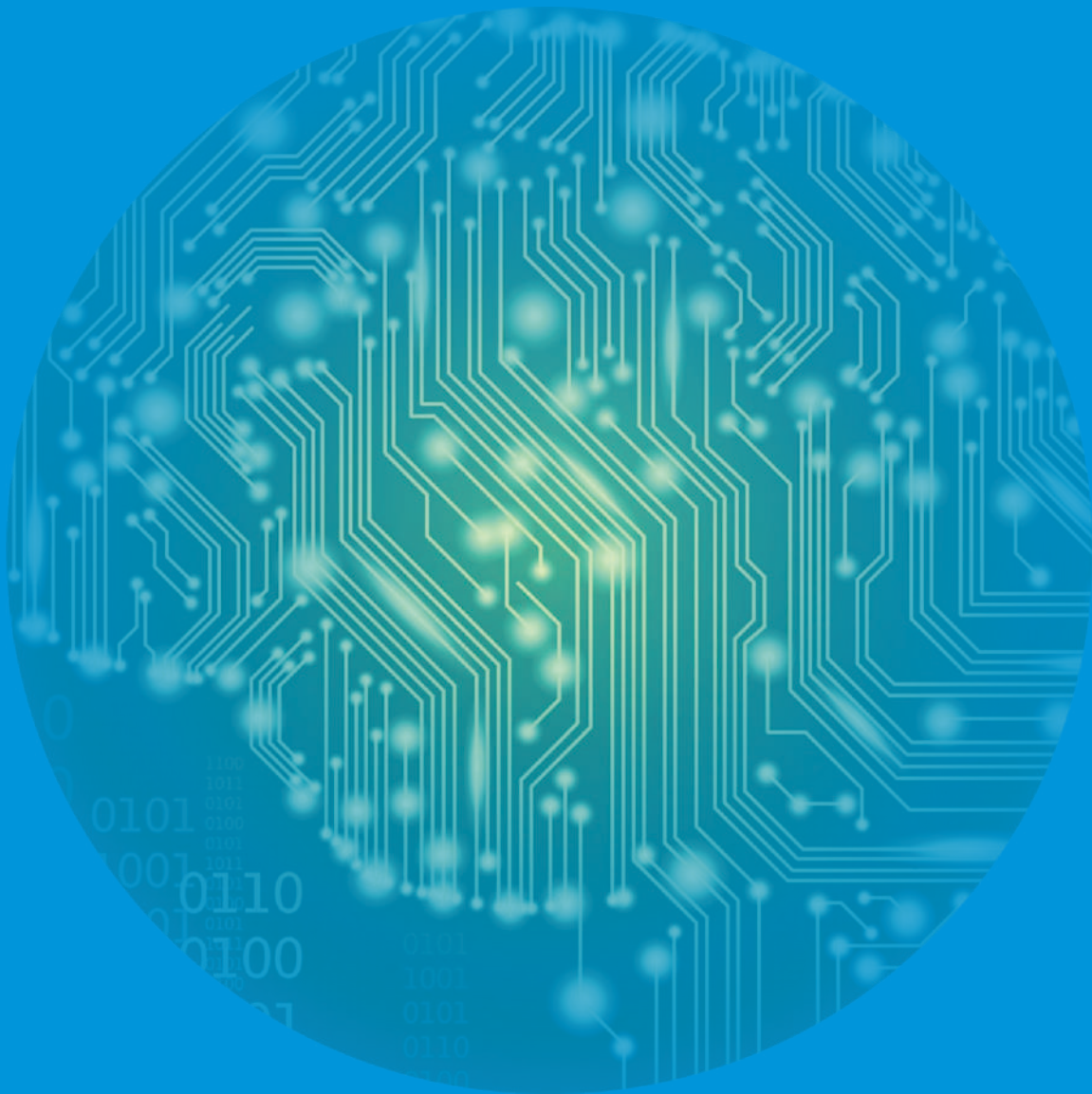




Excellence through Innovation



COMPANY PROFILE

About Us

Exceltech India Pvt. Ltd. is a pioneer in manufacturing of Motor Protection device, Cyclic load Energy Saver, Motor Soft starter kit, Automatic Power factor control panel, Heater controller, Earth leakage relay, Neutral to earth voltage relay, Neutral displacement relay, Over voltage & Undervoltage relay, Over current & earth fault relay, Earthing confirmation relay, Process earth pit / earth grid resistance monitoring system, Thyristor switches and Harmonic filters.

Excel products are supplied to various chemical, petrochemical, pharmaceutical, cement, paper and other process industries for various applications; to customers both in India and to South East Asia , Middle East and Africa.

Company history

Excel was started in year 1999 in a small workshop as 'Excel Electronics' manufacturing Cyclic load Energy Saver and Motor Protection Devices. In the pursuit to expand and develop new products, various other products were added to the portfolio in the subsequent years and expanded into a full fledged manufacturing facility for a range of products. In year 2016, the company was registered as " Exceltech India Private Limited" and the manufacturing operations were further expanded to meet the market demand for the products.

Mission

Our mission is to produce and continually develop quality products at a competitive price, while innovating and upgrading products as per technological advancements. We will always strive to serve our customer with the utmost integrity and to their complete satisfaction. It is our goal to accomplish our mission by continuous self improvement, growth in our operations and employees; while maintaining profitability to the benefit of our customers, employees and society. All employees will work together in combining their efforts and skills to fulfill our mission.

Vision

The vision of Excel is to be a leading manufacturer of high quality products. We dedicate ourselves to be the manufacturer by choice when our type of products are being sought. Excel will strive to maintain the image it has developed over the years with its customers, suppliers and employees as company of excellence.

Products Offered

Excel offers a range of products classified into following divisions :

1) Motor Protection devices (MPD) and Low voltage relays

- 1.1) Motor Protection Device, μ LEDx-T & μ DLEDx-T
- 1.2) Motor Protection Device, μ eLEDx-T
- 1.3) Motor Protection Device, μ HLEDx-T
- 1.4) Intelligent Motor Protection Device - μ LEDx-Ti and μ eLEDx-Ti
- 1.5) Motor Protection Device, WOD
- 1.6) Motor Protection Device, WID & WID –DT (Def. Time), WID-SD (Star Delta)
- 1.7) Cyclic Load Energy Saver, μ LEDx-DSM
- 1.8) Earth Fault Relay & Earth Leakage Relay
- 1.9) Neutral to Earth Voltage Relay
- 1.10) Neutral Displacement Relay

2) Motor Starter, heater Controllers

- 2.1) Three phase Electronic soft starter kits for motor start and stop
- 2.2) Heater controllers for temperature control of heaters

3) Earthing Confirmation Systems and Human body static dissipator

- 3.1) Vehicle Intelligent Earthing confirmation system, ECR plus
- 3.2) IBC's and equipment Earthing confirmation system, ECR -1
- 3.3) Retractable Static Earth Reel
- 3.4) Earth pit resistance measurement & monitoring system, ECR-2, ECR-2M
- 3.5) Earth grid resistance measurement & monitoring system, ECR-2 EPEG
- 3.6) Human body static charge dissipator

4) Power factor correction and harmonic solutions :

- 4.1) Automatic Power factor Control panels
- 4.2) Thyristor switches
- 4.3) Detuning Reactors
- 4.4) MPP Capacitors
- 4.5) Passive Harmonic filters
- 4.6) STATCOM
- 4.7) Neutral current compensator, NCC
- 4.8) Harmonic Studies

1) Motor Protection Devices and Low Voltage Relays :

This division manufactures LV Motor protection devices, Cyclic Load Energy Saver, protection relays including Earth leakage relay, Neutral to Earth voltage relay, Neutral displacement relay, Over voltage & Undervoltage relay, Over current & Earth fault relay. These relays cater the protection needs of LV distribution networks of process industries.

Excel is an established name in LV protection relays and renowned for delivering high quality products with long lasting performance, accurate and reliable operation.

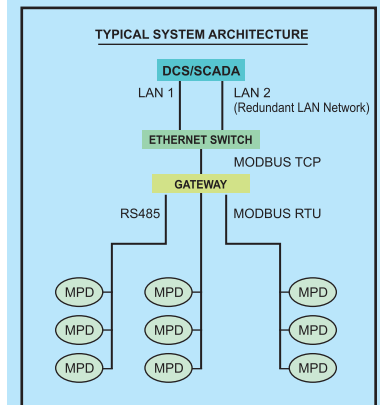
1.1) Motor Protection device, μ LEDx-T has won a lot of accolades and appreciation by customers for its high reliability and performance. The multifunction numerical motor protection device provides complete protection of low voltage motors. The motor protection device works on an advanced micro-controller based algorithm for precise estimate of thermal image of motor for starting, running, overload, stopping and unbalance conditions. The device μ DLEDx-T is having DIN rail mounting arrangement.

1.2) Motor Protection Device, μ LEDx-T is having features of motor protection covered by μ LEDx-T and additional protection functions of Over voltage, Under voltage, kW based Dry run protection and measurements of voltage, power factor, active and apparent power, active and apparent energy. Thus it combines motor protection and multifunction measurements in one device. This devices is a very economical and space saving solution for motor feeders.

1.3) Motor Protection Device, μ HLEDx-T is having features of motor protection covered by μ LEDx-T and additional function for number of start protection and thermal curves selectable from 1 to 60. This device is very much suitable for higher rating of motors with full load currents upto 1000A.



1.4) Motor Protection Device, μ LEDx-Ti and μ eLEDx-Ti are the intelligent devices which integrate the control functions and protection functions in a single device. These compact intelligent devices provide integrated monitoring, control and numerical protection and can be connected to PLC/ SCADA system through a communication network. It provides significant savings in cost and space requirement compared to the conventional discrete control and protection devices. It uses a network communication facility for remote control, alarm and annunciation, thereby reducing the expensive copper cabling and space requirement.



1.5) WOD Motor Protection device is a DIN rail mounted numerical motor protection unit with inbuilt CTs, without display. This is a cost effective solution for replacing the traditional bimetallic thermal overload relay with a numerical motor protection device for motors with current range upto 20A.



1.6) WID Motor Protection Device is having features of motor protection covered by WOD and a LED display unit with key pad for man machine interface. The device has Overload curve selection (model: WID) or over-current with definite time selection (model: WID-DT) apart from undercurrent and single phasing protections. This cost effective unit helps users by displaying the parameters during settings, three phase currents during running condition of motor and fault annunciation. It is available for current range upto 28A. It has optional feature of inbuilt star delta operation with change over relays and pause timer. This breakthrough product removes the conventional star and delta control contactors, star to delta changeover timer. This solution provides the integrated protection and control to small motors in a very cost effective way.



1.7) Cyclic load energy savers (DSM) are very much suited for applications wherein the motor is lightly loaded most of the time, with occasional short time heavy load. The motor runs in star connection when it is lightly loaded consuming less power and changes to delta connection when heavily loaded to deliver the required torque. There is substantial power saving in running the motor in star connection during lightly loaded condition.

1.8) Earth Leakage Relay/ Earth Fault Relay is a microcontroller based device which measures the true RMS current flowing through CBCT in the distribution system and protects the system in case of earth leakage or earth fault.

1.9) Neutral to Earth Voltage Relay is a microcontroller based true RMS voltage measuring device for monitoring the neutral to earth voltage and protecting the system against high resistance connection of neutral to earth or poor earthing connection of equipment.

1.10) Neutral Displacement Relay is a microcontroller based true RMS voltage measuring device for monitoring the open delta voltage (due to unbalanced voltage of three phases). It is used to protect ungrounded systems or high resistance earthed systems against earth faults.



2) Motor Starters, Heater Controllers :

This division is a pioneer in manufacturing soft starter kits for motors and heater controllers.

2.1) Soft starter kit is a simple, robust, user friendly solution for new installations and easy to retrofit into existing installations. Voltage control using thyristor provides soft starting and soft stopping of motors. There is very less power loss in the scheme, since thyristors are in circuit only during soft start and soft stop. Externally connected bypass contactor delivers power to the motor during running.



2.2) Heater Controller : Voltage control using thyristors is applied for temperature control in heater application very effectively. The heater controllers provide a very easy and reliable temperature control of the heaters suiting the process requirements.



3) Earthing Confirmation Systems and Static Charge Dissipator :

This division manufactures earthing confirmation systems for tanker earthing, IBC's, equipment earthing, earth pit/ earth grid resistance monitoring systems and Human Body Static Charge Dissipator.

3.1) Vehicle Intelligent Earthing Confirmation System

ECR plus identifies the tanker and continuously monitors resistance between the tanker and the earthing point connection. The system is interlocked with the transfer system to shut-down the product transfer operation if the resistance exceeds 8 ohms. It also recognizes when it is not connected to the chassis/ metal tank of the tanker. This ensures that the connection to the mudguard or the wheel nut by the operator would not allow the transfer operation and prevents the associated risk of accumulation of static charge on the tanker.

ECR-1 for tanker earthing confirmation continuously monitors resistance between the tanker and the earthing point connection however, identification of the tanker is to be checked by the operator.

3.2) IBC's and Equipment Earthing ECR-1 is used for safely discharging the static charge from Intermediate bulk containers (IBC's), FIBC C type bags. Multiple equipment at points like multi drum loading stations, IBC loading stations and railcar loading gantries would require a large number of conventional static earthing systems to provide protection against incendive electrostatic sparks. With ECR-1 multi-channel earthing confirmation system, it is possible to monitor multiple earthing systems simultaneously.

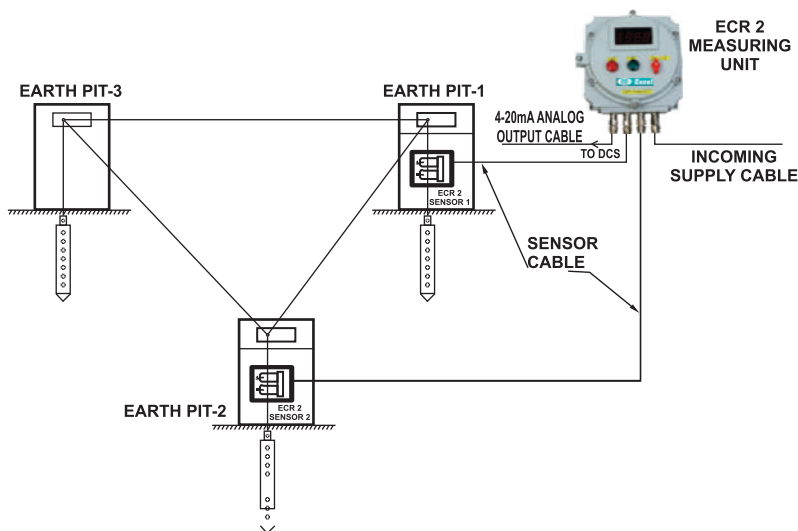
3.3) Retractable Static Earth Reel provides a compact arrangement of flexible copper cable insulated with outer PU coating and central sheath of teflon coated MS wire. This is ideally used for providing earthing connection to equipment in various static grounding applications.



3.4) Earth Pit resistance measurement and monitoring system ECR-2 provides continuous earth pit resistance measurement and monitoring system, with a display for loop resistance of Earth Pits, red indication lamp for open earth loop resistance and green indication lamp for healthy condition of earth loop resistance i.e. less than the set value (typically 8 ohms).

Mobile Earth Pit Resistance Monitoring System ECR-2M is provided with a hand held battery powered mobile measuring unit. The sensors are to be mounted permanently inside the earth pits with the earth pit connection cable passing through the sensor. For measuring the earth pit resistance, the measuring unit has to be plugged into the connector of the sensor mounted on the earth pit. When the power supply for the measuring unit is switched ON, it will measure the earth pit resistance and display it.

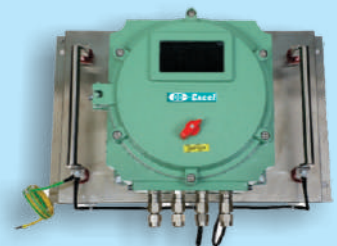
3.5) Earth Grid resistance measurement and monitoring system ECR-2 EPEG provides an advanced earth grid resistance measurement and monitoring system. It is provided with a display for indicating measured resistance value, red indication lamp for high earth grid resistance and green indication lamp for healthy condition of earth grid resistance.



**Measuring Unit of
ECR-2 / ECR-2 EPEG**



3.6) Human Body Static Charge Dissipator : To discharge the static charge developed in the human body to the ground, the human body static charge dissipator provides a complete solution, by providing a conductive path for static charge dissipation to earth and measuring the resistance of the human body. It ensures that the human body resistance is below 1000 k Ω and safe from risk of spark generated due to static discharge, when he enters a hazardous area.



4) Power factor correction and Harmonic Solutions :

Excel offers a range of products for PF correction and mitigation, reduction of harmonics. The solutions include APFC Panels, Thyristor Switches, Reactors, Capacitors, Passive Harmonic filters, STATCOM (static synchronous compensator) and NCC (Neutral current compensator).

4.1) Automatic Power factor Control Panels (APFC Panels)

using high speed thyristorised switching of capacitors are designed to support the supply voltage of the distribution system and to correct the power factor of connected loads. Thyristorised switching is ideal for frequent and fast switching of the capacitor banks.

4.2) Thyristor Switches are used for capacitor switching. They operate without mechanical wear, operate without noise and capable of transient free switching without inrush currents associated with electro-mechanical contactor switching. An unlimited number of switching is possible without applying significant stress to capacitors.

4.3) De-tuned Reactors of de-tuning factor of 5.76% ($F_r = 210\text{Hz}$), 7% ($F_r = 189\text{Hz}$), 14% ($F_r = 134\text{Hz}$) are connected in series with Capacitors to ensure that frequencies above de-tuned frequency (or resonant frequency) are blocked. Thus the system provides PF compensation for fundamental frequency and frequencies below the de-tuned frequency. The harmonics above the resonant frequency are filtered by de-tuned reactors connected in series with capacitors.



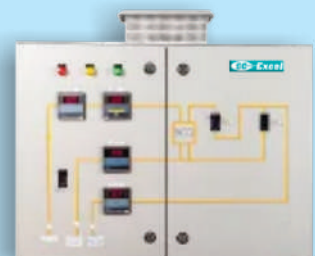
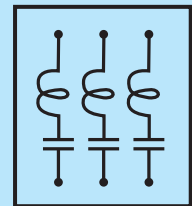
4.4) Capacitors : We offer special three phase metallized polypropylene (MPP) capacitors that are optimized for operation in filters or other systems with a very high share of harmonic distortion or with harmonics of high frequencies. Our range of three phase Ultra Heavy Duty capacitors are suitable for demanding operating conditions in power factor correction (such as high harmonic content and high operating temperatures).

4.5) Passive Harmonic filters : Combination of Reactors and Capacitors tuned to the most dominant frequency produced by the load; is connected to reduce the total harmonic distortion (THD) at the source. Passive harmonic filters are manufactured for wide range of currents to filter the harmonics.

4.6) STATCOM (Static Synchronous compensator) provides power factor compensation and active harmonic filter using IGBT based Voltage source inverter. The PF compensation and harmonic filtering can be selected and set as per the load requirement upto the rating of the STATCOM.

4.7) NCC (Neutral current compensator) is a very reliable, rugged passive element installed near to the load and provides low impedance path for unbalance currents and third harmonic currents produced by the load; thus reduces the neutral current flowing from the load to the source.

4.8) Harmonic studies : Excel conducts harmonic study of the network and advises customers on the most optimum solution using a combination of the above products for harmonic mitigation and reduction.

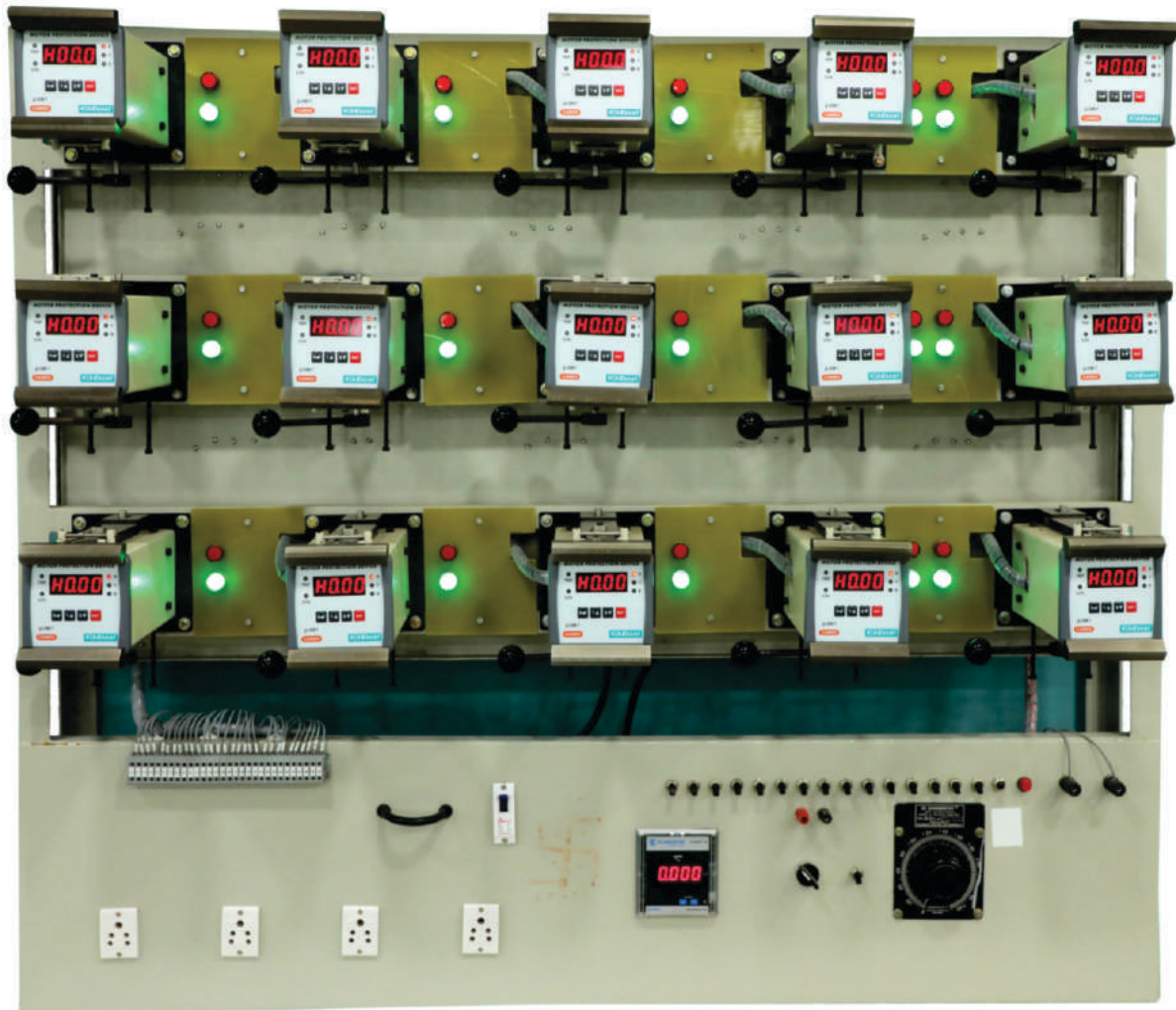


Some of our valued customers:

- 1 Aarti Industries Ltd
- 2 Atul Limited
- 3 Bharat Rasayan Ltd.
- 4 Cheminove India Ltd.
- 5 Hikal Ltd.
- 6 Meghmani Ltd. (Group)
- 7 Neogen Chemicals Ltd.
- 8 L&T Hydrocarbon Engineering Ltd. (LTHE)
- 9 Oil & Natural Gas Corp. Ltd. (ONGC)
- 10 Rallis India Limited
- 11 Sajjan India Limited
- 12 Sterling Auxiliaries Pvt Ltd
- 13 Sulphur Mills Ltd.
- 14 Tagros Chemicals India Pvt. Ltd.
- 15 Unique Chemicals
- 16 Alembic Ltd
- 17 Best Paper Mill Pvt Ltd
- 18 Berger Paints India Ltd
- 19 Bhilosa Industries Pvt. Ltd
- 20 Cadila Healthcare Ltd (Zydex)
- 21 Colourtex Industries Pvt Ltd
- 22 Deccan Fine Chemicals (India) Pvt Ltd
- 23 Grasim Industries Ltd (Adity Birla Group)
- 24 Gujarat Ambuja Expert Pvt Ltd
- 25 J K Lakshmi Cement
- 26 J K Paper Ltd
- 27 Jay Chemicals Pvt Ltd
- 28 KLJ Plasticizers Ltd.
- 29 Lupin Limited
- 30 Laxmi Organic Industries Ltd
- 31 Modern Insulators Ltd
- 32 Coromandel International Ltd
- 33 Hetro Drugs Labs Ltd
- 34 Bhansali Engineering Polymers Ltd
- 35 Shah Pulp & Paper Mills
- 36 N R Agarwal Paper Mills
- 37 United Phosphorus Ltd. (UPL)
- 38 Hindustan Petroleum Corp. Ltd. (HPCL)
- 39 Indian Oil Corp. Ltd. (IOCL)
- 40 Industrial Boilers Ltd. (IBL)
- 41 Oriental Carbon and Chemicals Ltd.
42. TATA Steel Limited



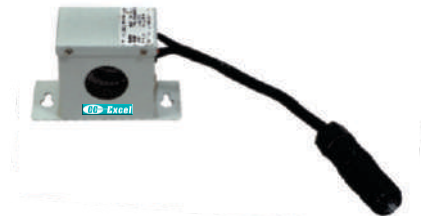
MPD Calibration / Testing Facility



CT / CBCT



ECR-2 Sensor



Fast Discharge Resistor



Multiple Product Testing Facilities







MOTOR PROTECTION DEVICE



INTELLIGENT MPD



WOD / WID-MPD



CYCLIC LOAD ENERGY SAVER



SOFT STARTER KIT



HEATER CONTROLLER



ECR PLUS / ECR 1



ECR -2



ECR -2 EPEG



HUMAN BODY STATIC DISSIPATOR



APFC PANEL



THYRISTOR SWITCHES



DE-TUNED REACTORS



CAPACITORS



STATCOM



NCC



992/1/17, GIDC, Nr. Shri Gayatrikrupa Ice Factory,
Makarpura, Vadodara - 390 010. GUJARAT, INDIA.



+91 7862084856, 7567093806, 9376222606



marketing.exceltechindia@gmail.com
sales@exceltechindia.com
exell2003@yahoo.com



www.exceltechindia.com



1000+
Clients

More than
3 Lakhs
Installations



AN ISO 9001:2015
CERTIFIED COMPANY