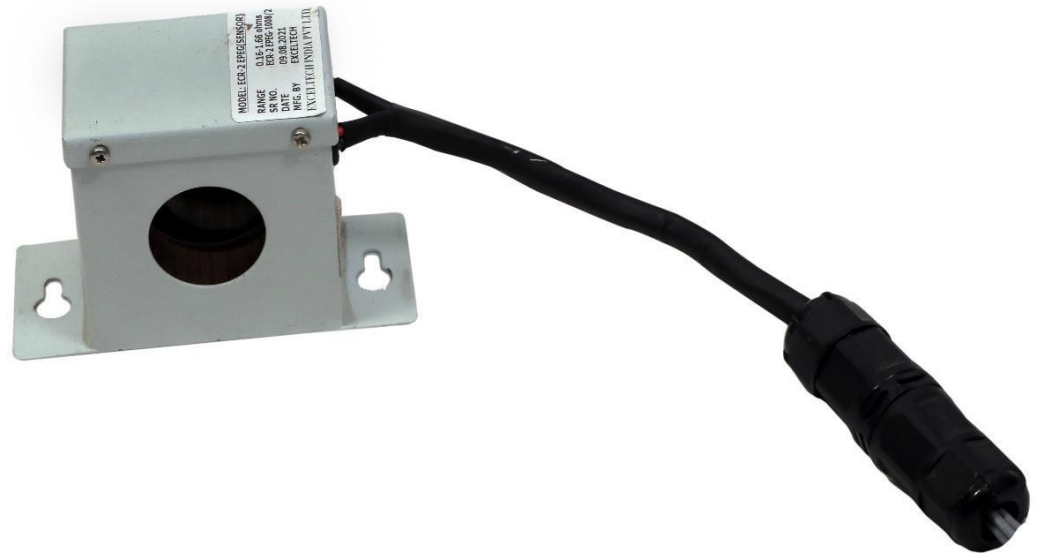


Earth Grid Resistance Measurement and Monitoring System



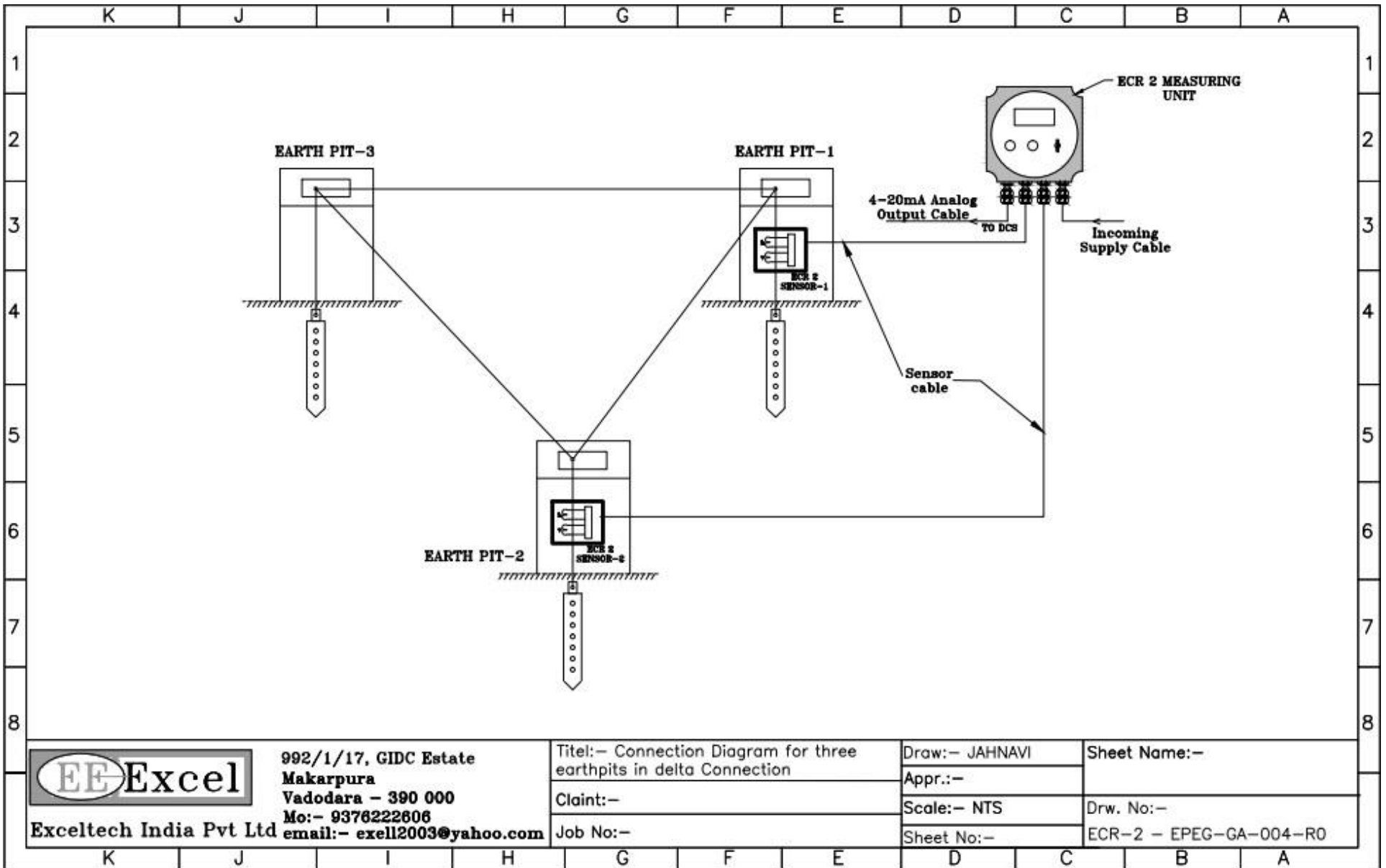
MODEL: ECR-2 EPEG

Resistance of three individual earth pits and overall grid resistance can be monitored with ECR-2EPEG. For earth grid with more than three earth pits, resistance of two individual earth pits, parallel resistance of remaining earth pits and the overall earth grid resistance can be monitored with ECR-2 EPEG. ECR-2 measuring unit can communicate the earth grid resistance through RS-485 Modbus RTU or through 4-20mA analog output signal to the remote DCS.

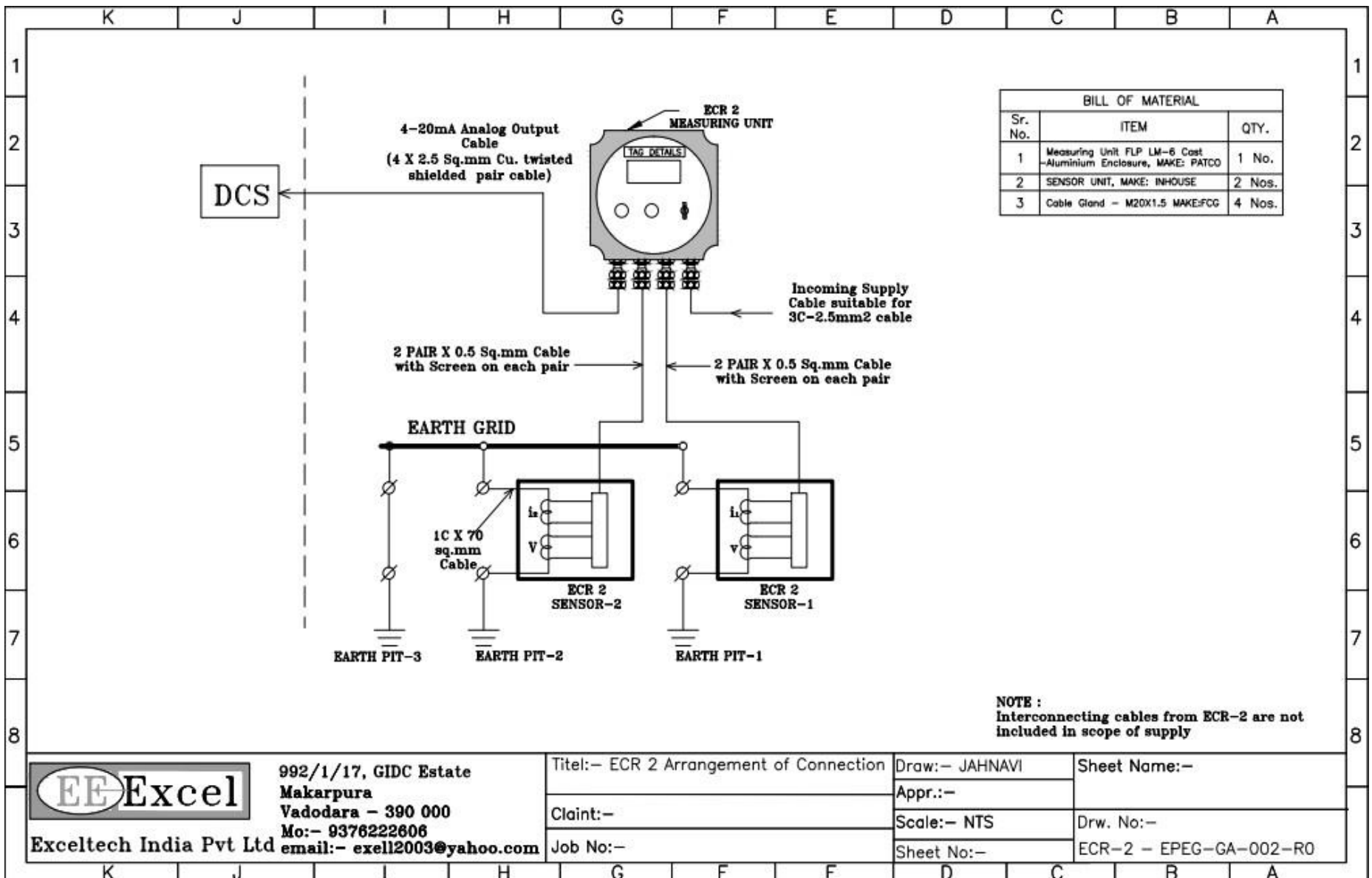
TECHNICAL SPECIFICATION

Rated Power Supply	240VAC or 110VAC -10%+15%, 45-65Hz, 24V AC/DC Optional
Total Power Requirement	10 VA (Max.)
Range for earth grid resistance	0.16 to 3 Ohms, (factory settable)
Resolution	0.01 Ohm.
Communication method	4 to 20 mA analog output
Connection arrangement	Two sensors connected in series between two earth pits and earth grid.
Numbers of channels for measurement	Two channels
Inputs	1) Process earth pit connection to three or more earth pits
Cable entries	Three or four, suitable for 19mm Gland
Indication	Green LED (EARTH OK), Red LED (EARTH HIGH)
Relay output rating	Two Change over 250V/ 5A (Resistive load)
Weight	7.5kg (Approx.) without clamp

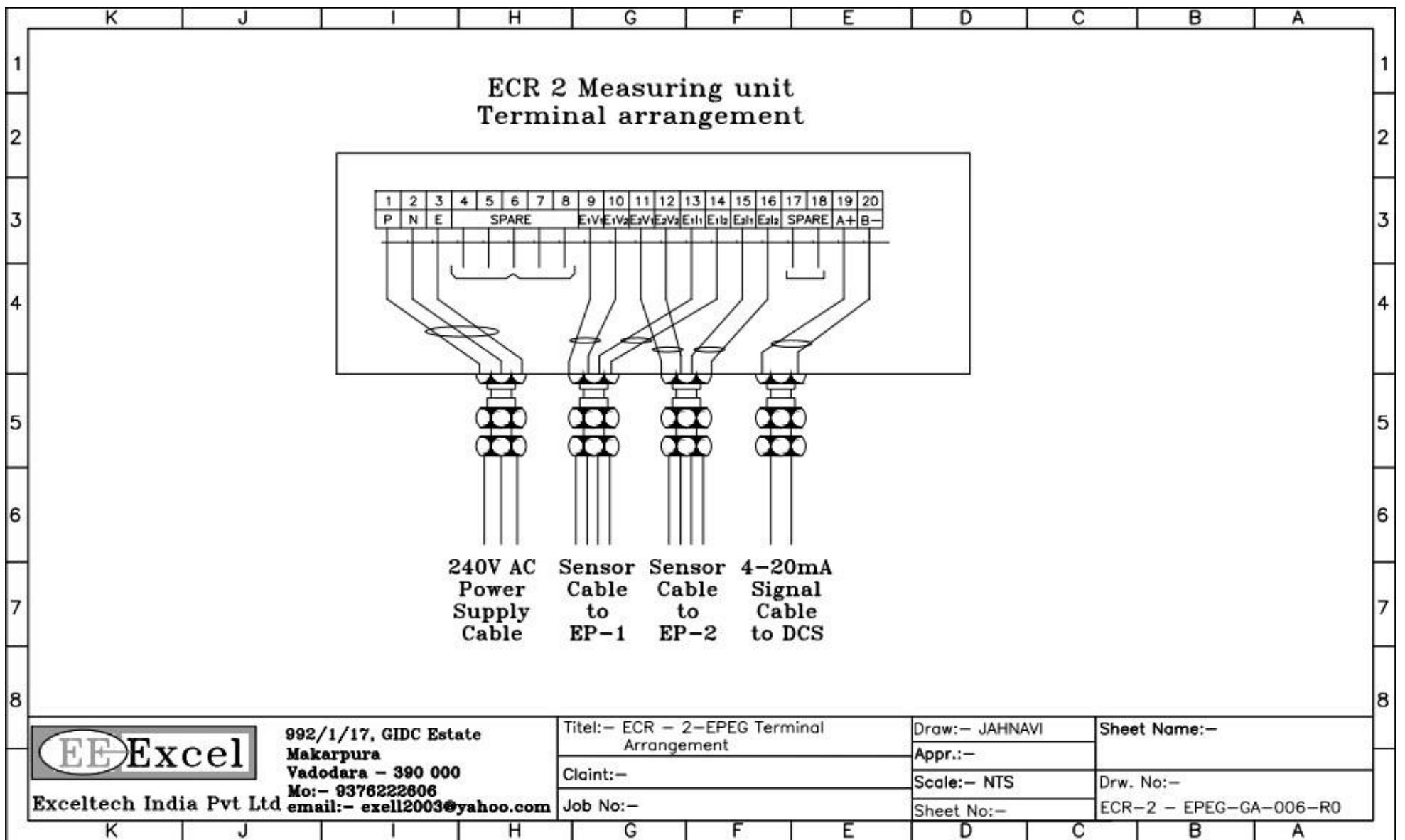
CONNECTION DIAGRAM FOR EARTH PIT:



ARRANGEMENT OF CONNECTION DIAGRAM:



TERMINAL ARRANGEMET DIAGRAM:



SENSOR DETAIL:

